



Fluxtek International Corporation

Product Catalogue

INDEX

Water Dispenser	P.03
Compact R.O. system	P.07
Undersink R.O. system	P.15
Commercial R.O. system	P.22
Purifier	P.25
Membranes	P.28
Filter	P.31
Pump	P.42
Accessory	P.49
Media	P.60





The top quality based on
the spirit of craftsmanship





Safe and healthy drinking water for everyone



Water Dispenser



SA-Series

P.04

Heacle

P.05

Compact with hot / warm water

SA Dispenser with Reverse Osmosis

Features

- Quick change filter design
- Pure water with instant heat
- 4 temperature to choose with simple touch
- Dimensions : H38 x W18 x D42 (cm)

Specifications

Working pressure System with pump 3-5 bar

Inlet temperature 20 - 35°C

Max. Input TDS 1000 ppm



Model

Model	Output (GPD)	Pump	Membrane
SA-50	50	-	1812x1

Filtration Flow



The most heart-easing care for your baby

Introduction

- Watering the most precious of your life
- Caring for both mother and baby
- Sterilization under ambient temperature
- Safe and energy saving
- Smart temperature control, one touch for water
- User-friendly interface, easy to operate
- The most intelligent water keeper at home



Heacle
Mom-N-baby RO Dispenser

Mom-N-baby RO Dispenser

Features

- One touch for sterilization in ambient temperature
- Water for drinking and disinfection, the safeguard for safety and health
- Water for baby formula in just one press, time saving in feeding baby
- Timer for auto pipeline sterilization
- Luminescence design for easy positioning at night
- No installation needed, just plug in and use. Suitable for any places at home
- Quick and simple filter change
- Multiple temperature design, convenient for milk powder or any drinks
- User friendly interface with 45 degree angle for easy viewing
- Specially designed adjustable tray for each stage during the baby's growth

Specifications

Working pressure	System with pump	3-5	bar
Inlet temperature	20 - 35°C		
Max. Input TDS	1000 ppm		

Model

Model	Output (GPD)	Pump	Membrane
Heacle	50	-	1812x1



Filtration Flow



PP
5µm PP sediments
quick change cartridge



CTO
Carbon block
quick change cartridge



RO
50 GPD
18x12 quick change
membrane

Casing Series

CG2-Series	P.08
CG-Series	P.09
CH-Series	P.10
CJ-Series	P.11
CB-Series	P.12
CD-Series	P.12
CE-Series	P.13
CF-Series	P.13
FZ-Series	P.14
CS-Series	P.14



CG2-Series

Features

- One piece casing design for compact RO system and purifier
- Filter cartridge, convenient for filter replacement
- Press to open the case, convenient for filter replacement
- LED / LCD panel control
- Dimension: H42 x W30 x D41.5 (cm)



Specifications

Working pressure	System with pump	3-5	bar
Inlet temperature	20 - 35°C		
Max. Input TDS	1000 ppm		



Model

Model	Output (GPD)	Pump	Membrane	Tank
CG2-50	50	LF-30L	1812x1	2.2G
CG2-200	200	HF-45L	2012x1	2.2G
CG2-300	300	HF-50L	2412x1	-
CG2-400	400	HF-50L	2012x2	-
CG2-600	600	HF-600L	2012x3	-

Filtration Flow



Casing Series CG-Series

Features

- Breakthrough design with misting system
- One piece casing design for compact RO system, misting system and purifier
- LED / LCD panel control
- Dimensions : H42 x W30 x D41.5 (cm)

Specifications

Working pressure	System with pump	3-5	bar
Inlet temperature	20 - 35°C		
Max. Input TDS	1000 ppm		



MISTING SYSTEM



DIRECT FLOW
RO SYSTEM / PURIFIER



RO SYSTEM



Red



Blue



Black



Grey

Model

Model	Output (GPD)	Pump	Membrane	Tank
CG-50	50	LF-30L	1812x1	2.2G
CG-200	200	HF-45L	2012x1	2.2G
CG-300	300	HF-50L	2412x1	-
CG-400	400	HF-50L	2012x2	-
CG-600	600	HF-600L	2012x3	-
CG-Mist	-	AC-45LPR	-	-
		AC-45LSP	-	-

Filtration Flow



PP

5µm PP sediments
quick change cartridge



GAC

Granular carbon
quick change cartridge



CTO

Carbon block
quick change cartridge



RO

50 GPD
18x12 quick change
membrane



Post Filter

Nanometer Silver
C.T.O carbon block

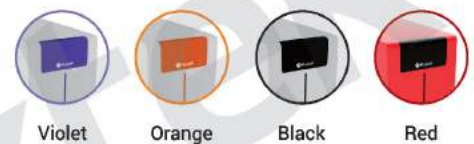
Casing Series CH-Series

Features

- Innovative design with professional external
- Front case removable, easy replacement of filters
- Larger pure water storage with 2.2G steel tank
- Patented leak detector installed, overflow avoided
- Dimensions : H42 x W25 x D42 (cm)

Specifications

Working pressure	System with pump	3-5	bar
Inlet temperature	20 - 35°C		
Max. Input TDS	1000 ppm		



Model

Model	Output (GPD)	Pump	Membrane	Tank
CH-50	50	LF-30L	1812x1	2.2G
CH-75	75	LF-33L	1812x1	2.2G
CH-100	100	HF-45L	1812x1	2.2G

Filtration Flow



Casing Series CJ-Series

Features

- 10cm thin casing designed
- Compacts can be integrate to enlarge output
- Filter cartridge, easy replacement without trouble
- Revolutionary design, special lines for easier handling
- Elegant model, counter top available
- Dimensions : H43 x W11 x D42 (cm)

Specifications

Working pressure	System with pump	3-5	bar
Inlet temperature	20 - 35°C		
Max. Input TDS	1000 ppm		



Model

Model	Output (GPD)	Pump	Membrane
CJ-50	50	LF-30L	1812x1
CJ-75	75	LF-33L	1812x1
CJ-100	100	HF-45L	1812x1
CJ-200	200	HF-45L	2012x1
CJ-400	400	HF-45L	2012x2

Filtration Flow



Casing Series CB-Series

Features

- Compact in size
- Elegant model
- Filter cartridge, convenient for filter replacement
- Dimensions : H42 x W24 x D47 (cm)

Model

Model	Output (GPD)	Pump	Membrane	Tank
CB-50	50	LF-30L	1812x1	2.0G
CB-75	75	LF-33L	1812x1	2.0G
CB-100	100	HF-45L	1812x1	2.0G
CB-200	200	HF-45L	2012x1	2.0G
CB-300	300	HF-50L	2412x1	-
CB-400	400	HF-50L	2012x2	-
CB-600	600	HF-600L	2412x2	-



Casing Series CD-Series

Features

- Compact in size
- Elegant model
- Filter cartridge, convenient for filter replacement
- Dimensions : H42 x W24 x D48 (cm)

Model

Model	Output (GPD)	Pump	Membrane	Tank
CD-50	50	LF-30L	1812x1	2.0G
CD-75	75	LF-33L	1812x1	2.0G
CD-100	100	HF-45L	1812x1	2.0G
CD-200	200	HF-45L	2012x1	2.0G
CD-300	300	HF-50L	2412x1	-
CD-400	400	HF-50L	2012x2	-
CD-600	600	HF-600L	2412x2	-



Casing Series CE-Series

Features

- Casing model with housing filters build in
- Lower filter replacing costs comparing to compacts
- Filter cartridge model available
- Dimensions : H42 x W25 x D45 (cm)

Model

Model	Output (GPD)	Pump	Membrane	Tank
CE-50	50	LF-30L	1812x1	2.0G
CE-75	75	LF-33L	1812x1	2.0G
CE-100	100	HF-45L	1812x1	2.0G
CE-200	200	HF-45L	2012x1	2.0G
CE-300	300	HF-50L	2412x1	-
CE-400	400	HF-50L	2012x2	-
CE-600	600	HF-600L	2412x2	-



Casing Series CF-Series

Features

- Casing model with housing filters build in
- Lower filter replacing costs comparing to compacts
- Filter cartridge model available
- Dimensions : H42 x W25 x D43 (cm)

Model

Model	Output (GPD)	Pump	Membrane	Tank
CF-50	50	LF-30L	1812x1	2.0G
CF-75	75	LF-33L	1812x1	2.0G
CF-100	100	HF-45L	1812x1	2.0G
CF-200	200	HF-45L	2012x1	2.0G
CF-300	300	HF-50L	2412x1	-
CF-400	400	HF-50L	2012x2	-
CF-600	600	HF-600L	2412x2	-



Casing Series FZ-Series

Features

- Compact R.O. System
- Counter top design
- Space saving with 9 liters washable storage tank
- 5-stage filters installed
- Dimensions : H39.0 x W24.0 x D38.0 (cm)



Model

Model	Output (GPD)	Pump	Membrane
FZ-50	50	LF-30L	1812x1



Casing Series CS-Series

Features

- Compact in size
- Elegance model
- Filter cartridge, convenience for filter replacement
- Counter top model available
- Dimensions : H45 x W25 x D41 (cm)



Model

Model	Output (GPD)	Pump	Membrane	Tank
CS-300	300	HF-50L	2412x1	-
CS-400	400	HF-50L	2012x2	-
CS-600	600	HF-600L	2412x2	-



Undersink R.O. System

CFK4-Series P.16

CLK-Series P.17

CFG2-Series P.17

Control box-Series P.18

High flow-Series P.19

Bracket-Series P.20

Stand-Series P.21



CFK4 Domestic Reverse Osmosis

Features

- 4-8 stage various water treatment systems
- Available for homes or low water pressure applications
- Purifies water up to 99% including chemicals that can harm human body
- Simple component designed, easy to install
- Filter cartridge ,convenient for filter replacement



Specifications

Working pressure	System with pump	3-5	bar
Inlet temperature	20 - 35°C		
Max. Input TDS	1000 ppm		

Model

Model	Output(GPD)	Pump	Membrane	Dimension(cm)
CFK4-50P	50-100	LF-30L	1812x1	27x20x42
CFK4-200P	200	HF-45L	2012x1	27x20x42
CFK4-300PD	300	HF-50L	2412x1	27x20x42
CFK4-400PD	400	HF-50L	2012x2	27x20x42

Filtration Flow



Cartridge Stand-Series

CLK Domestic Reverse Osmosis

Features

- 4-8 stage various water treatment systems
- Available for homes or low water pressure applications
- Purifies water up to 99% including chemicals that can harm human body
- Simple component designed, easy to install

Model

Model	Output (GPD)	Pump	Membrane	Dimension(cm)
CLK-50P	50-100	LF-30L	1812x1	35x20x51
CLK-200P	200	HF-45L	2012x1	35x20x51
CLK-300PD	300	HF-50L	2412x1	35x20x51
CLK-400PD	400	HF-50L	2012x2	35x20x51
CLK-600PD	600	HF-600L	2412x2	35x20x51



Cartridge Stand-Series

CFG2 Domestic Reverse Osmosis

Features

- 4-8 stage various water treatment systems
- Available for homes or low water pressure applications
- Purifies water up to 99% including chemicals that can harm human body
- Simple component designed, easy to install

Model

Model	Output (GPD)	Pump	Membrane	Dimension(cm)
CFG2-50P	50-100	LF-30L	1812x1	42x22x42
CFG2-200P	200	HF-45L	2012x1	42x22x42
CFG2-300PD	300	HF-50L	2412x1	42x22x42
CFG2-400PD	400	HF-50L	2012x2	42x22x42
CFG2-600PD	600	HF-600L	2412x2	42x22x42



Control Box-Series

Direct Flow Reverse Osmosis

Features

- Direct flow reverse osmosis with high performance in the production of pure water.
- No storage tank required.
- High production performance: 55-65 l/h*
- Water quality control

Specifications

Working pressure	System with pump	6-7	bar
Inlet temperature	20 - 35°C		
Max. Input TDS	1000 ppm		



Model

Model	Output(GPD)	Pump	Membrane	Dimension(cm)
FE-400CPD	400	HF-50L	2012x2	38x26x48

* Flow may vary according to pressure, temperature and water salinity

Control Box for R.O. System, TDS Monitor



CB-07WD

Flushing setting / Manual flushing option
Suitable for residential unit / Audible alarms



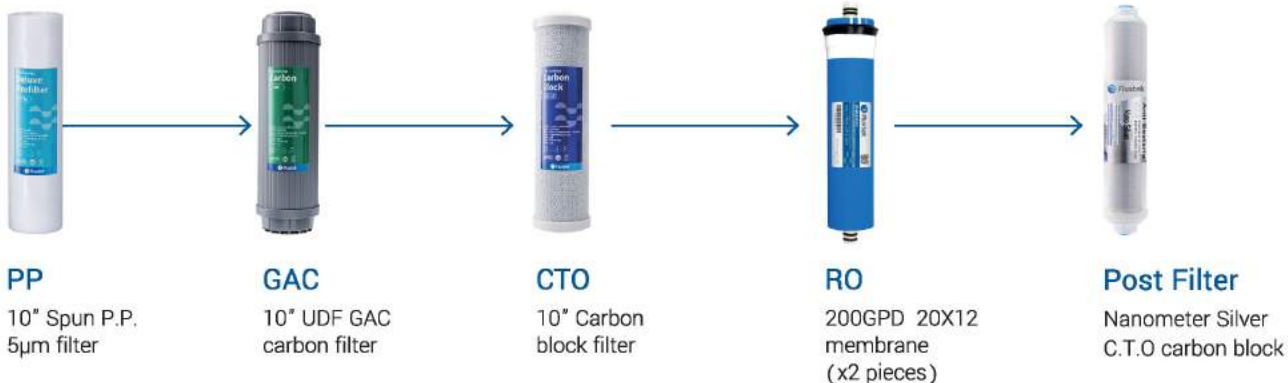
CB-07W

Flushing setting / Manual flushing option
Suitable for commercial unit



Control Box for R.O. System,
TDS Monitor

Filtration Flow



High Flow-Series

Direct Flow Reverse Osmosis

Features

- 4-8 stage various water treatment systems
- Available for homes or low water pressure applications
- Purifies water up to 99% including chemicals that can harm human body
- Simple component designed, easy to install
- Stand for easier filter change

Specifications

Working pressure	System with pump	6-7	bar
Inlet temperature	20 - 35°C		
Max. Input TDS	1000 ppm		



Model

Model	Output(GPD)	Pump	Membrane	Dimension(cm)
FE-600PD	600	HF-600L	2412x2	37x25x45
FE-600D	600	-	2412x2	37x25x45

Filtration Flow



Bracket-Series

Domestic Reverse Osmosis

Features

- 4-8 stage various water treatment systems
- Available for homes or low water pressure applications
- Purifies water up to 99% including chemicals that can harm human body
- Simple component designed, easy to install



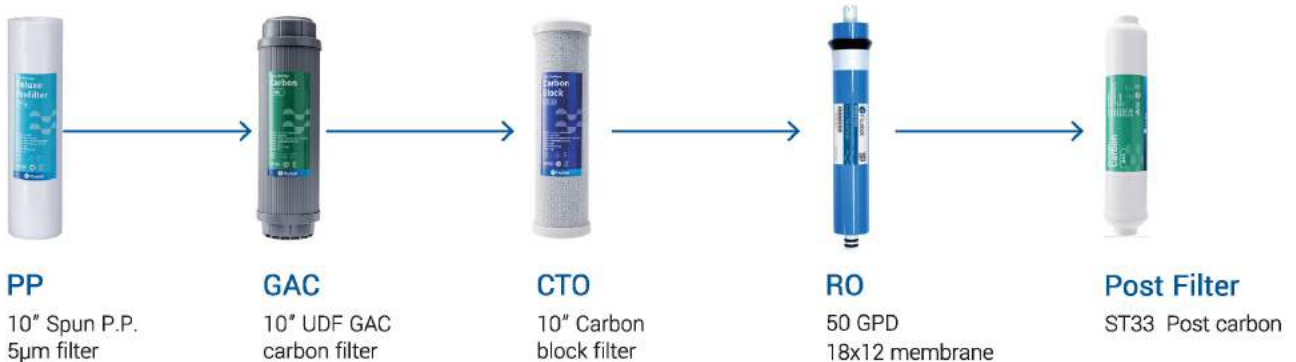
Specifications

Working pressure	System with pump	3-5	bar
Inlet temperature	20 - 35°C		
Max. Input TDS	1000 ppm		

Model

Model	Output(GPD)	Pump	Membrane	Dimension(cm)
FE-105P	50-100	LF-30L	1812x1	38x20x46
FE-200P	200	HF-45L	2012x1	38x20x46
FE-300PD	300	HF-50L	2412x1	37x25x48
FE-400PD	400	HF-50L	2012x2	37x25x48
FE-600PD	600	HF-600L	2412x2	37x25x45

Filtration Flow



Stand-Series

Domestic Reverse Osmosis

Features

- 4-8 stage various water treatment systems
- Available for homes or low water pressure applications
- Purifies water up to 99% including chemicals that can harm human body
- Simple component designed, easy to install
- Stand for easier filter change

Specifications

Working pressure	System with pump	3-5	bar
Inlet temperature	20 - 35°C		
Max. Input TDS	1000 ppm		



Model

Model	Output(GPD)	Pump	Membrane	Dimension(cm)
FE-105P	50-100	LF-30L	1812x1	37x25x48
FE-200P	200	HF-45L	2012x1	37x25x48
FE-300PD	300	HF-50L	2412x1	37x25x48
FE-400PD	400	HF-50L	2012x2	37x25x48
FE-600PD	600	HF-600L	2412x2	37x25x45

Filtration Flow



Commercial R.O. System

FM-3L Water dispenser

P.23

Commercial R.O. System

P.24



FM-3L Water dispenser

Features

- 304 stainless steel
- 3 temperature options: cold / warm / hot
- Leak detector design
- Hot water 5L / cold water 3L / warm water 10L
- Power: hot water 750W / cold water 215W



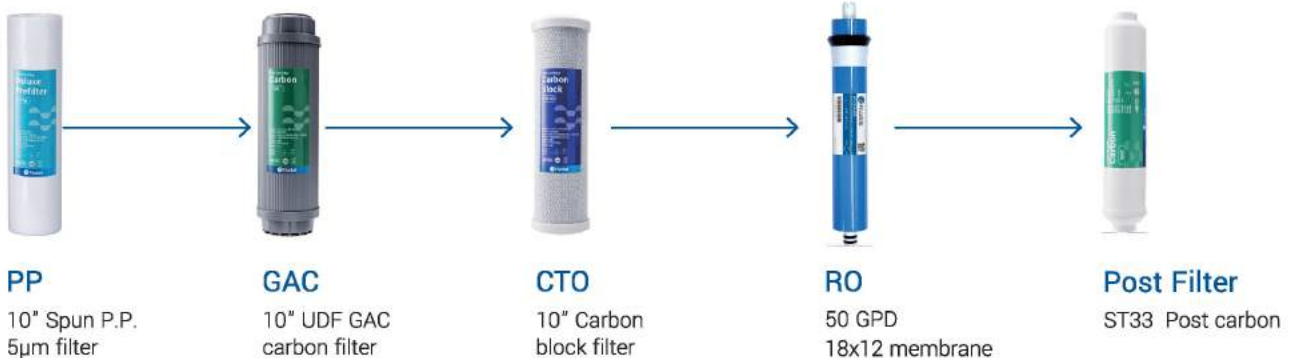
Specifications

Working pressure	System with pump	3-5	bar
Inlet temperature	20 - 35°C		
Max. Input TDS	1000 ppm		

Model

Model	Output(GPD)	Pump	Membrane	Dimension(cm)
FM-3L	50-100	LF-30L	1812x1	128x43x46
FM-3L	200	HF-45L	2012x1	128x43x46

Filtration Flow



Commercial R.O. System

Features

- High performance in the production of pure water.
- High production performance: 110-120 l/h*

Specifications

Working pressure	System with pump	7-12	bar
Inlet temperature	20 - 35°C		
Max. Input TDS	1000 ppm		

Model

Model	Output(GPD)	Pump	Membrane	Dimension(cm)
FL-400	400	HF-50L	2012x2	47x30x87
FL-800	800	HF-50Lx2	2012x4	45x30x96

* Flow may vary according to pressure, temperature and water salinity.



Commercial R.O. System

Features

- High performance in the production of pure water.
- High production performance: 110-120 l/h*

Specifications

Working pressure	System with pump	7-12	bar
Inlet temperature	20 - 35°C		
Max. Input TDS	1000 ppm		

Model

Model	Output(GPD)	Pump	Membrane	Dimension(cm)
LSC-800	800	1/2HP	TW4021x1	55x51x102
LSC-1500	1500	1HP	TW4040x1	75x51x157

* Flow may vary according to pressure, temperature and water salinity.



Purifier

CFK4-Series

P.26

Cartridge Purifier-Series

P.26

Big Blue Filtration-Series

P.27

Purifier Filtration-Series

P.27



CFK4 Domestic purifier

Features

- High volume
- Easy to install
- Plug-free design
- Cartridge filters, easier to replace

Specifications

- 1/4" connection
- Max. Temperature: 38°C
- Working pressure: 2.5 - 4 bar



Model

Model	Dimension(cm)
CFK4	37x9x37

Cartridge purifier

Single filtration composed of 5µm sediments bayonet cartridge made of antibacterial fiber polypropylene and carbon block with NANOSILVER technology that provide water free of chlorine, odor and taste



Innovative bayonet cartridges facilitate installation

Specifications

- 1/4" connection
- Max. Temperature: 38°C
- Working pressure: 2.5 - 4 bar

Model



Model	Dimension(cm)
PP + CTO	35x8x21
PP + GAC + CTO	30x9x37

Big Blue filtration

Duplex and triplex filtration of 2-piece filter housing for domestic drinking water applications. Include wrench and wall bracket.

Specifications

- 3/8" connection
- Max. Temperature: 38°C
- Working pressure: 2.5 - 4 bar



Model

CODE	MODEL	1st	2nd	3rd	Dimension(cm)
01	FP-2BB10	10" BBPP	10" BBCTO	-	41x20x45
02	FP-2BB20	20" BBPP	20" BBCTO	-	42x19x78
03	FP-3BB20	20" BBPP	20" BBGAC	20" BBCTO	62x20x71

Purifier filtration

Domestic filtration with activated carbon filter for the production of water free of odour, taste and free suspended solids.

Possibility to use different cartridges as 10" length and 63mm - 69mm diameter

- Easy installation, filter connected directly to tap water faucet
- Maximum temperature: 38°C



Model

CODE	MODEL	1st	2nd	3rd	4th	5th	Dimension(cm)
01	FP-1F	2 in 1 PP+GAC	-	-	-	-	-
02	FP-2F	10" PP	10" CTO	-	-	-	-
03	FP-3F	10" PP	10" GAC	10" CTO	-	-	29x14x42
04	FP-4F	10" PP	10" GAC	10" CTO	K-33GAC	-	42x14x39
05	FP-5F	10" PP	10" GAC	10" CTO	K-33GAC	ST-33 CTO	42x14x40

Membranes

2540 RO Membrane P.29

Fluxtek Membrane P.29

Filmtec Membrane P.30

Toray Membrane P.30

Encapsulated Membrane P.30

Ultrafiltration Membrane P.30



2540 RO Membrane

Features

- Effective and rapid removal of salt, heavy metals, chemicals and pesticides in water up to 95% and more
- Suitable for source water under TDS1000ppm
- Suitable for restaurants, schools, water stations and etc.



CODE	MODEL
01	Fluxtek Membrane 25x40 800 GPD

Membranes

Features

- Innovative idea with cartridge design.
- Models available with different gallons for easy replacement.
- A wide variety of models, allowing for residential and direct flow applications.

Fluxtek

CODE	MODEL
01	Fluxtek Membrane 18x12 50 GPD
02	Fluxtek Membrane 18x12 60 GPD
03	Fluxtek Membrane 18x12 75 GPD
04	Fluxtek Membrane 18x12 100 GPD
05	Fluxtek Membrane NF-90 18x12 100 GPD
06	Fluxtek Membrane 20x12 200 GPD
07	Fluxtek Membrane 23x12 250 GPD
08	Fluxtek Membrane 24x12 300 GPD
09	Fluxtek Membrane 30x12 400 GPD



Filmtec

CODE	MODEL
01	FILMTEC membrane 18x12 50 GPD
02	FILMTEC membrane 18x12 75 GPD
03	FILMTEC membrane 18x12 100 GPD
04	FILMTEC membrane TW-40x21 800 GPD
05	FILMTEC membrane BW-40x21 800 GPD
06	FILMTEC membrane TW-40x40 1500 GPD
07	FILMTEC membrane BW-40x40 1500 GPD



Toray

CODE	MODEL
01	TORAY Membrane 18x12 50 GPD
02	TORAY Membrane 18x12 75 GPD



Encapsulated

CODE	MODEL
01	Encapsulated Membrane 18x12 50 GPD
02	Encapsulated Membrane 18x12 60 GPD
03	Encapsulated Membrane 18x12 75 GPD
04	Encapsulated Membrane 18x12 100 GPD
05	Encapsulated Membrane 20x12 200 GPD



Ultrafiltration Membrane



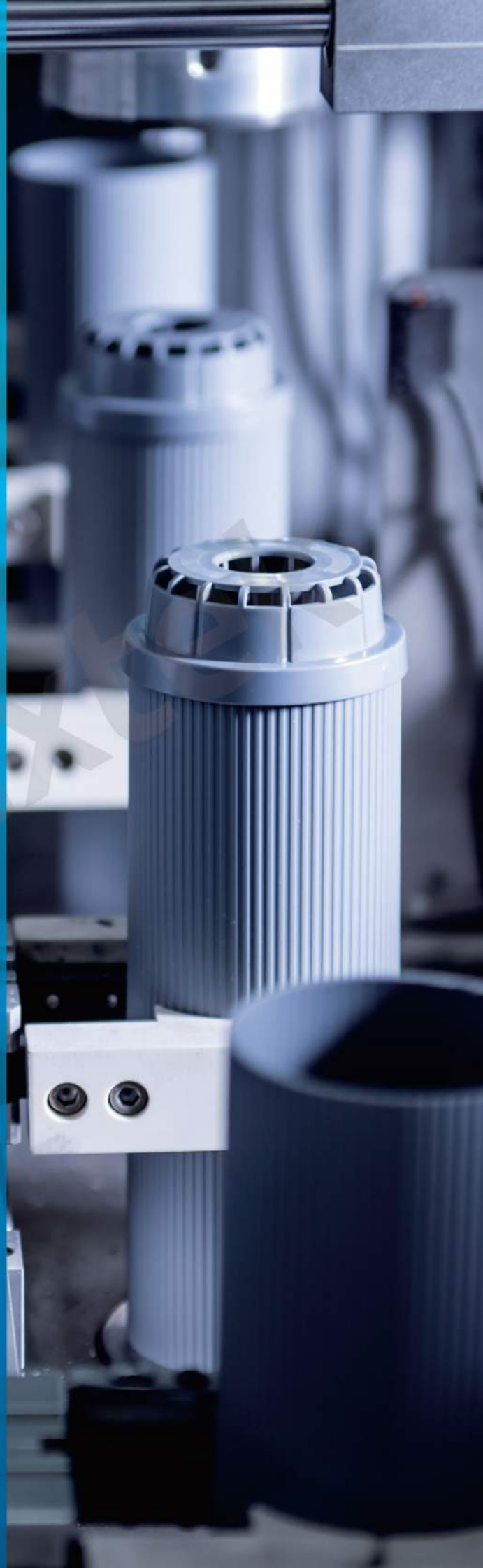
Encapsulated

CODE	MODEL
01	Encapsulated Ultrafiltration Membrane



Filter

Quick change filter	P.32
Polypropylene filter	P.34
Carbon filter	P.35
Nanometer silver filter	P.36
Carbon block filter	P.37
K33 filter	P.38
LK-QM filter	P.38
Refillable filter	P.38
ST Post filter	P.39
Shower filter	P.39
HD-50 Hydrogen-rich technical filter	P.40



Quick change

CFG2 Series

- Quick connection
- Life time: 7000 liters*
- Maximum flow: 2.0 lpm
- Maximum pressure: 8.75 bar
- Maximum temperature: 38°C

CODE	MODEL	PACKAGING UNITS
01	5 µm PP sediments cartridge	25
02	Granular carbon GAC cartridge	25
03	Carbon block CTO cartridge	25
04	CFG2 cartridge head	1



*The life of the filters may vary depending on the quality of water supply, the use of it and amount of impurities contained.

CLK Series

- Quick connection
- Life time: 7000 liters*
- Maximum flow: 2.0 lpm
- Maximum pressure: 8.75 bar
- Maximum temperature: 38°C

CODE	MODEL	PACKAGING UNITS
01	5 µm PP sediments cartridge	25
02	5 µm Antibacterial PP sediments cartridge	25
03	Granular carbon GAC cartridge	25
04	Carbon block CTO cartridge	25
05	Antibacterial NANOSILVER carbon block CTO cartridge	25
06	CLK cartridge head	1



*The life of the filters may vary depending on the quality of water supply, the use of it and amount of impurities contained.

FLUXTEK

Quick change

CFK4 Series

- Quick connection
- Life time: 7000 liters*
- Maximum flow: 2.0 lpm
- Maximum pressure: 8.75 bar
- Maximum temperature: 38°C

CODE	MODEL	PACKAGING UNITS
01	5 µm PP sediments cartridge	25
02	Granular carbon GAC cartridge	25
03	Carbon block CTO cartridge	25
04	CFK4 cartridge head	1



*The life of the filters may vary depending on the quality of water supply, the use of it and amount of impurities contained.

CLG1 Series

- Quick connection
- Life time: 7000 liters*
- Maximum flow: 2.0 lpm
- Maximum pressure: 8.75 bar
- Maximum temperature: 38°C

CODE	MODEL	PACKAGING UNITS
01	5 µm PP sediments cartridge	25
02	Granular carbon GAC cartridge	25
03	Carbon block CTO cartridge	25



*The life of the filters may vary depending on the quality of water supply, the use of it and amount of impurities contained.

CLG2 Series

- Quick connection
- Life time: 7000 liters*
- Maximum flow: 2.0 lpm
- Maximum pressure: 8.75 bar
- Maximum temperature: 38°C

CODE	MODEL	PACKAGING UNITS
01	5 µm PP sediments cartridge	25
02	Granular carbon GAC cartridge	25
03	Carbon block CTO cartridge	25



*The life of the filters may vary depending on the quality of water supply, the use of it and amount of impurities contained.

Polypropylene cartridge

Melt blown polypropylene

- Filter media: melt blown polypropylene
- Strong dirt holding capability
- 63 mm diameter
- Maximum temperature: 63°C

CODE	MODEL	FILTRATION	FLOW l/h	PACKAGING UNITS
01	10" Filter	1 µm	800	50
02	10" Filter	5 µm	800	50
03	20" Filter	1 µm	1400	25
04	20" Filter	5 µm	1400	25



Ø 69mm Melt blown polypropylene

- Filter media: melt blown polypropylene
- Strong dirt holding capability
- High retention capacity: Ø 69 mm
- Maximum temperature: 63°C

CODE	MODEL	FILTRATION	FLOW l/h	PACKAGING UNITS
01	Ø 69 mm 10" Sediments Filter	5 µm	800	50



Ø 69mm Antibacterial melt blown polypropylene

- Filter media: melt blown polypropylene with antibacterial fibers
- Strong dirt holding capability
- High retention capacity: Ø 69 mm
- Maximum temperature: 63°C

CODE	MODEL	FILTRATION	FLOW l/h	PACKAGING UNITS
01	Ø 69 mm 10" Antibacterial Sediments Filter	5 µm	800	50



Carbon cartridges

GAC-UDF

- Filter media: coconut shell granular activated carbon
- Diameter \varnothing 63 mm
- Maximum pressure: 6 bar
- Working temperature: 5° to 63°C
- Maximum flow 10" : 3.67 lpm
- Maximum flow 20" : 8 lpm

CODE	MODEL	FILTRATION	FLOW l/h	PACKAGING UNITS
01	10" Granular activated carbon(GAC)	-	3.67 lpm	25
02	20" Granular activated carbon(GAC)	-	8 lpm	12



GAC-Thread Cap

- Filter media: coconut shell granular activated carbon
- Diameter \varnothing 63 mm
- Maximum pressure: 6 bar
- Working temperature: 5° to 63°C
- Maximum flow 10" : 3.67 lpm
- Maximum flow 20" : 8 lpm

CODE	MODEL	FILTRATION	FLOW l/h	PACKAGING UNITS
01	10" Granular activated carbon(GAC)	-	3.67 lpm	25
02	20" Granular activated carbon(GAC)	-	8 lpm	12



GAC-UDF 2in1

- Filter media: coconut shell granular activated carbon
- Diameter \varnothing 63 mm
- Maximum pressure: 6 bar
- Working temperature: 5° to 63°C
- Maximum flow 10" : 3.67 lpm
- Maximum flow 20" : 8 lpm

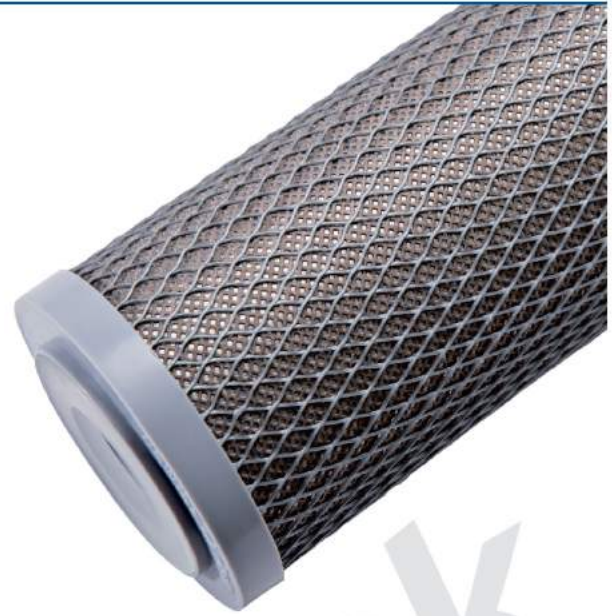
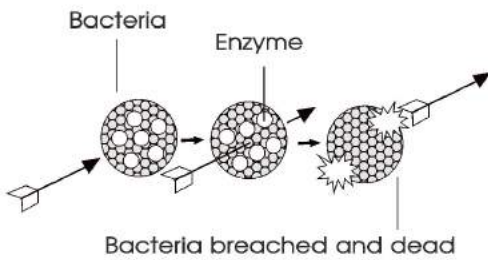
CODE	MODEL	PACKAGING UNITS
01	10" 2 in 1 P.P.5 μ + G.A.C (Blue/Green/White)	25



Nanometer silver filter

Antibacterial filter

- Different solution in eliminating impurities and bacteria
- Provide more constant sterilization
- Keep bacteria away from the filter
- Silver as natural antibacterial and antifungal media



Nanometer Silver filter meets certificates:

SGS

Tested by SGS Taiwan LTD. RI/2007/A0134A-01
 RI/2007/A0132-1A-01
 RI/2007/A0133-2A-01



ø 69mm Antibacterial carbon block filter

Antibacterial carbon block filter with NANOSILVER technology

- Avoid proliferation and growth of bacterias
- Remove 99% of the existing bacterias
- SGS certified
- Filter media: Carbon block CTO
- Filtration 5 micron
- Diameter ø 69 mm
- Maximum pressure: 6 bar
- Working temperature: 5° to 63°C

CODE	MODEL	FILTRATION	FLOW l/h	PACKAGING UNITS
01	ø 69 mm 10" Antibacterial carbon block (CTO)	10 µm	3.67 lpm	25
02	ø 69 mm 20" Antibacterial carbon block (CTO)	10 µm	7.5 lpm	12



Carbon block filter

Ø 63mm Carbon block filter

- Filter media: carbon block CTO
- Filtration: 10 microns
- Diameter Ø 63 mm
- Maximum pressure: 6 bar
- Working temperature: 5° to 63°C
- Maximum flow 10" : 3.67 lpm
- Maximum flow 20" : 7.5 lpm

CODE	MODEL	FILTRATION	FLOW l/h	PACKAGING UNITS
01	10" Carbon block (CTO)	5 µm	3.67 lpm	25
02	20" Carbon block (CTO)	5 µm	7.5 lpm	12



Ø 63mm Coconut carbon block filter

- Filter media: coconut carbon block CTO
- Filtration: 10 microns
- Diameter Ø 63 mm
- Maximum pressure: 6 bar
- Working temperature: 5° to 63°C
- Maximum flow 10" : 3.67 lpm
- Maximum flow 20" : 7.5 lpm

CODE	MODEL	FILTRATION	FLOW l/h	PACKAGING UNITS
01	10" Carbon block (CTO)	5 µm	3.67 lpm	25
02	20" Carbon block (CTO)	5 µm	7.5 lpm	12



Ø 69mm Coconut carbon block filter

- Filter media: coconut carbon block CTO
- Filtration: 10 microns
- Diameter Ø 69 mm
- Maximum pressure: 6 bar
- Working temperature: 5° to 63°C
- Maximum flow 10" : 3.67 lpm
- Maximum flow 20" : 7.5 lpm

CODE	MODEL	FILTRATION	FLOW l/h	PACKAGING UNITS
01	Ø 69 mm 10" Carbon block (CTO)	5 µm	3.67 lpm	25



In-line Filters

K33 Series

Patented with internal built structure in significant dusty water reduction.

- 1/4" Female thread connection
- Maximum flow: 2.0 lpm
- Diameter: 2 1/2"
- Maximum pressure: 8.75 bar
- Length: 12"
- Maximum temperature: 38°C
- Life time: 7000 liters*



Patented: M459018

CODE	MODEL	PACKAGING UNITS
01	5 µm PP sediments in-line filter	25
02	1 µm PP sediments in-line filter	25
03	Granular carbon GAC in-line filter	25
04	Carbon block CTO in-line filter	25
05	Ion Exchange Resin in-line filter	25
06	Antibacterial NANOSILVER carbon block CTO filter	25



*The life of the filters may vary depending on the quality of water supply, the use of it and amount of impurities contained.

LK-QM Series

- 1/4" male quick connection
- Length: 12"
- Maximum flow: 2.0 lpm
- Diameter: 2 1/2"
- Life time: 7000 liters*
- Maximum pressure: 8.75 bar
- Maximum temperature: 38°C



CODE	MODEL	PACKAGING UNITS
01	5 µm PP sediments in-line filter	25
02	Granular carbon GAC in-line filter	25
03	Antibacterial NANOSILVER carbon block CTO filter	25



*The life of the filters may vary depending on the quality of water supply, the use of it and amount of impurities contained.

Refillable filter series

- 1/4" Female thread connection

CODE	MODEL	DIAMETER	LENGTH	PACKAGING UNITS
01	ST cartridge	2"	10"	25
02	KT cartridge	2 1/2"	12"	25
03	New UDF 10"(20")	-	-	25
04	ECO Housing	-	-	25



ST post filter series

- 1/4" Female thread connection
- Diameter: 2"
- Maximum temperature: 38°C
- Length: 10"
- Life time: 5.670 liters*
- Maximum flow: 1.9 lpm
- Maximum pressure: 8.75 bar

CODE	MODEL	PACKAGING UNITS
01	5 µm PP sediments post filter	25
02	1 µm PP sediments post filter	25
03	Granular carbon GAC post filter	25
04	Carbon block CTO post filter	25
05	Ion exchange resin post filter	25
06	Mineral post filter	25
07	Alkaline post filter	25
08	4 in 1 mineralized post filter	25
09	Far Infrared ray post filter	25
10	Bamboo carbon post filter	25
11	Antibacterial NANOSILVER carbon block CTO filter	25



*The life of the filters may vary depending on the quality of water supply, the use of it and amount of impurities contained.

Shower filter

Remove chlorine and other chlorinated substances

- Effective media KDF-55
- Working pressure: 20-80 psi
- Working temperature: 5-38°C
- Includes GAC carbon+ KDF media
- Diameter 8.0 mm
- Height 13.0 mm



CODE	MODEL
01	GAC carbon + KDF media

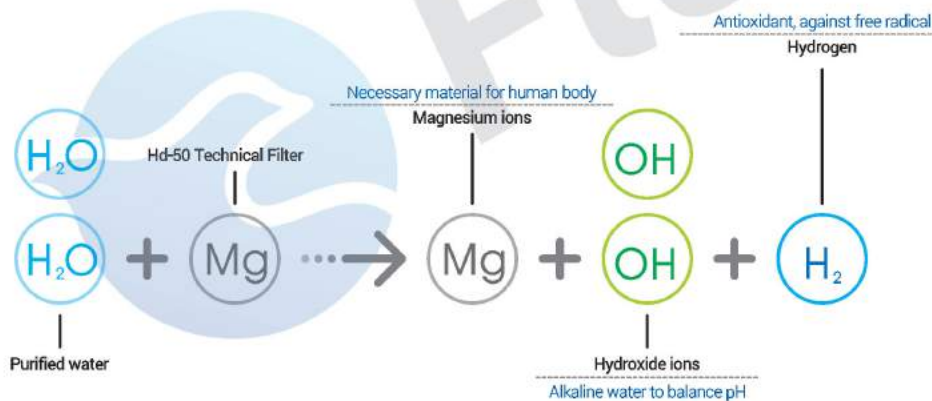
HD-50 Hydrogen-rich technical filter

- With the Hd-50 the reverse osmosis treatment is completed providing a hydrogen-rich alkaline water.
- Hd-50 is obtained from the purest magnesium minerals by sophisticated extraction techniques.
- Hd-50 supply to the water essential minerals like magnesium, essential for the proper functioning of the nervous and muscular system.
- Antioxidant effect due to the hydrogen molecules, protecting cells from the radicals responsible for some diseases and cellular aging.
- Obtaining alkaline water that helps to keep the pH of the body properly balanced and thereby providing health and wellness.
- 99.99% pure magnesium, making the pH level of water weakly alkaline and enriching with hydrogen molecules.



Technical Specifications:

- Connection: 1/4" female thread
- Life time: 4000 liter
- Maximum flow: 2.8 lpm
- Maximum pressure: 8.62 bar
- Maximum temperature: 42°C
- Length: 10"
- Diameter: 2"



Certificate:

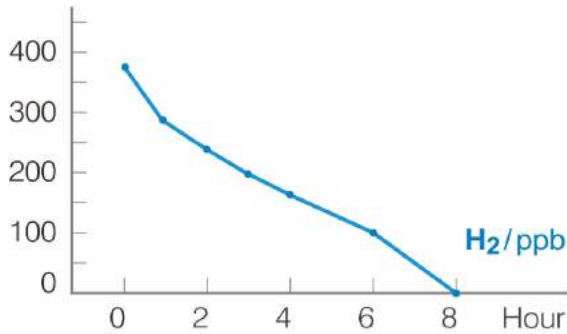
SGS

Tested by SGS Taiwan LTD. PX-2006-6008302

CODE	DESCRIPTION
01	Hd-50 Hydrogen-rich Technical Filter



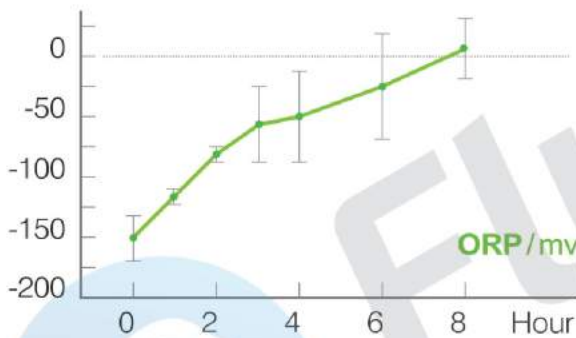
HD-50 Hydrogen-rich technical filter



Redox potential indicators

In this experiment, the oxidation-reduction potential as an indicator reforming the drinking water filter through Hd50 redox potential and time of the correspondence between the measured and summarized them as shown on the left.

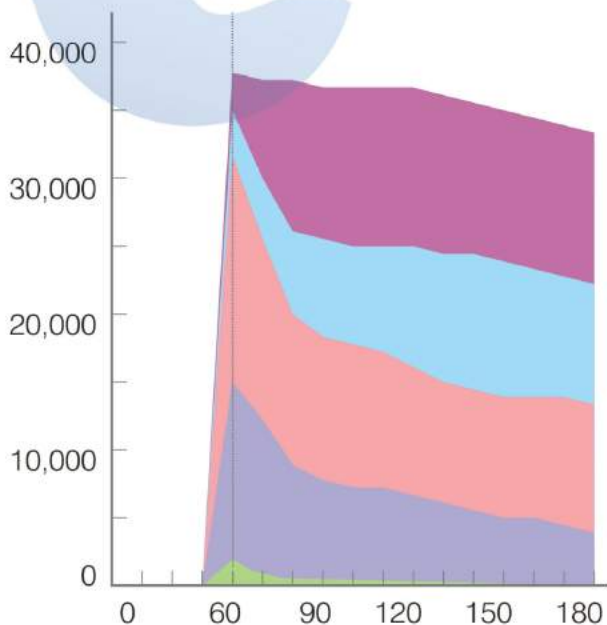
Experiments show that, after Hd50 filter drinking water, redox potential can be maintained for about 8 hours.



Antioxidant capacity indicators

In this experiment, the antioxidant index, the water through the filter Hd50 with different content of molecular hydrogen in the ability to remove hydrogen peroxide, to be measured and summed up as shown on the left.

Experimental results show that the filter after Hd50 water, the hydrogen molecule content in a different state, there are antioxidant capacity.



- H₂O₂ AVE.
- 0.1 ml HW AVE.
- 0.3ml HW AVE.
- 0.5ml HW AVE.
- HW AVE.

Pump

AC-Series P.43

HF-Series P.44

LF-Series P.47

Transformer P.48



High flow booster pump

AC-Series

- Revolutionary design
- High efficiency, low energy consumption
- Longer lifespan with durable performance
- Product with different specifications



AC-45LPR



AC-45LSP

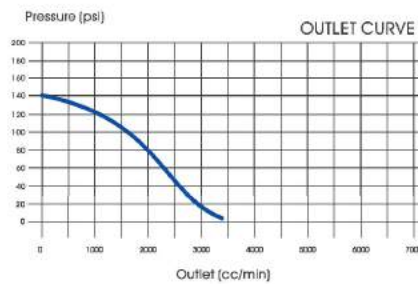


AC-45

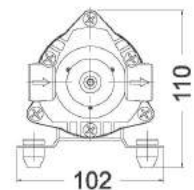
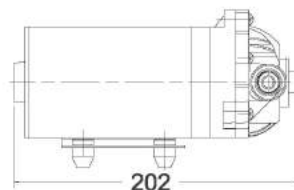
High flow booster pump with low energy consumption

Technical specifications:

- Electrical connection: AC110V/220V
- Maximum operating pressure: 230 psi
- Maximum output: 3.1 L/min



CODE	MODEL
01	AC-45



High flow booster pump

AC-45LPR

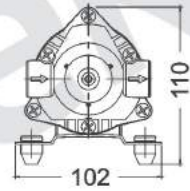
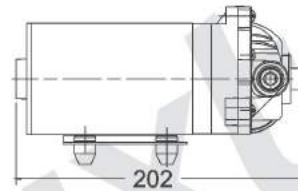
High flow booster pump with low energy consumption

Technical specifications:

- Electrical connection: AC110V/220V
- Maximum operating pressure: 400 psi
- Maximum output: 6.0 L/min



CODE	MODEL
01	AC-45 LPR

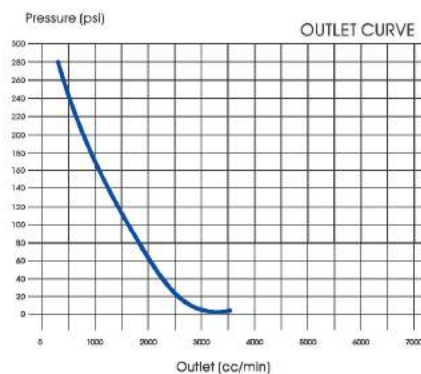


AC-45LSP

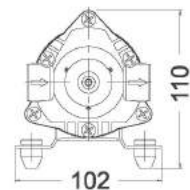
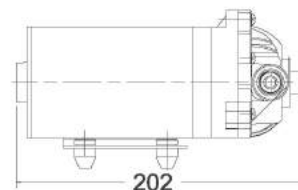
High flow booster pump with low energy consumption

Technical specifications:

- Electrical connection: AC110V/220V
- Maximum operating pressure: 400 psi
- Maximum output: 6.0 L/min



CODE	MODEL
01	AC-45 LSP

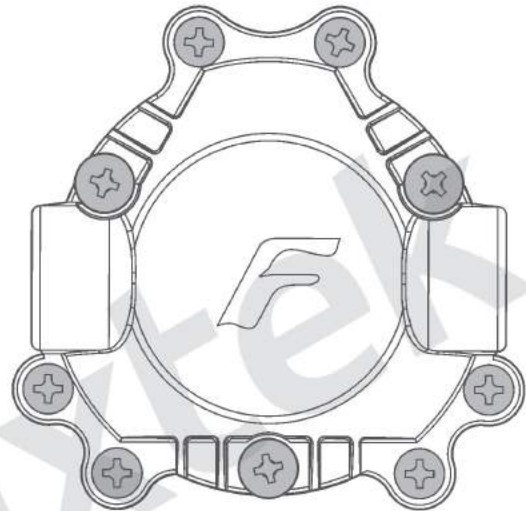


High flow booster pump

HF Series

High Flow Booster Pump are intended for use with reverse osmosis membranes rated up to 600GPD.

- State of the art design
- High efficiency, low energy consumption
- Longer lifespan with durable performance
- Product with different specifications

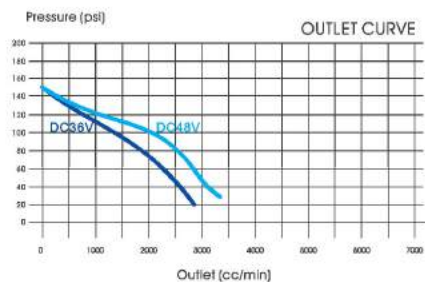


HF-45L

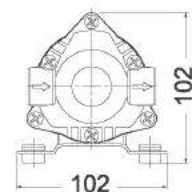
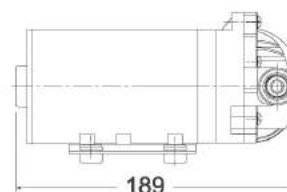
High flow booster pump with low energy consumption

Technical specifications:

- Electrical connection: DC36V 2.0A
- Maximum operating pressure: 150 psi
- Membrane: 200GPD
- Maximum output: 3.0 L/min



CODE	MODEL
01	HF-45L
02	Transformer 230V-36VDC 2.0A



High flow booster pump

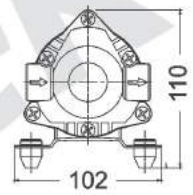
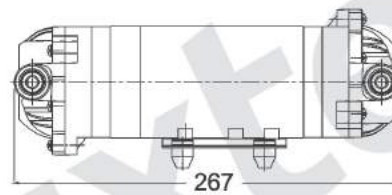
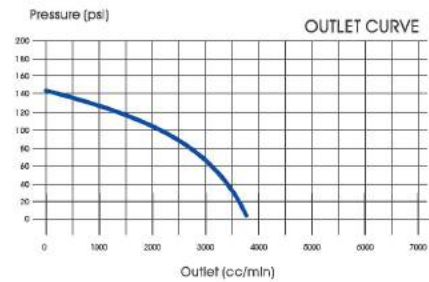
HF-50L

High flow booster pump with low energy consumption

Technical specifications:

- Electrical connection: DC48V 2.3A
- Maximum operating pressure: 150 psi
- Membrane: 2x200GPD
- Maximum output: 4.0 L/min

CODE	MODEL
01	HF-50L
02	Transformer 230V-48VDC 2.3A



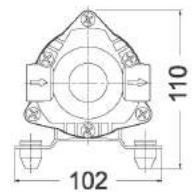
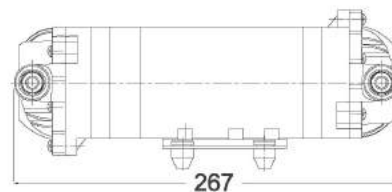
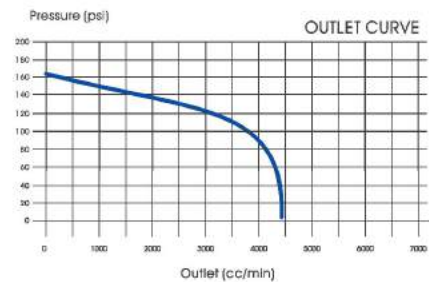
HF-600L

High flow booster pump with low energy consumption

Technical specifications:

- Electrical connection: DC48V 5.0A
- Maximum operating pressure: 170 psi
- Membrane: 2x300GPD
- Maximum output: 4.8 L/min

CODE	MODEL
01	HF-600L
02	Transformer 230V-48VDC 5.0A



Pump and transformer

LF Series

High flow booster pump ideally suited to provide reliable inlet pressure for efficient membrane utilization.

These highly resistant pumps are capable of continuous duty and are effective for different applications.

- Highly resistant diaphragm pump
- Designed for domestic and commercial water treatment systems
- High efficiency, low energy consumption
- Longer lifespan with durable performance



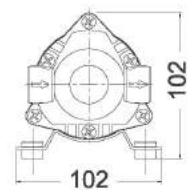
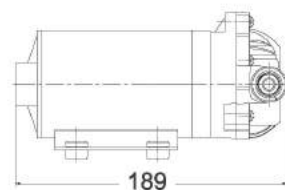
LF-30L

Pump with low energy consumption

Technical specifications:

- Electrical connection: DC24V 1.2A
- Maximum operating pressure: 130 psi
- Membrane: 50GPD and 75GPD
- Maximum output: 1.8 L/min

CODE	MODEL
01	LF-30L
02	Transformer 230V-24VDC 1.2 A



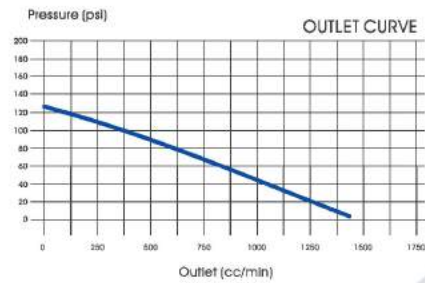
Pump and transformer

LF-33L

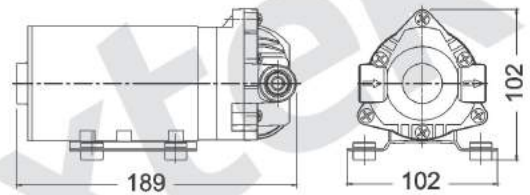
Pump with low energy consumption

Technical specifications:

- Electrical connection: DC24V 1.2A
- Maximum operating pressure: 130 psi
- Membrane: 50GPD and 75GPD
- Maximum output: 1.8 L/min



CODE	MODEL
01	LF-33L
02	Transformer 230V-24VDC 1.2 A



CODE	MODEL
01	110V/48V/5A 220V/48V/5A
02	110V/48V/2.3A 220V/48V/2.3A
03	110V/48V/2A 220V/48V/2A
04	110V/36V/2A 220V/36V/2A
05	110V/24V/1.2A 220V/24V/1.2A



Accessory

Faucet	P.50
Filter housing	P.51
Housing wrench	P.51
Membrane vessel	P.52
Storage tank	P.53
Ball valve	P.53
Flow restrictor	P.53
Leak detector	P.54
Shut-off & check valve	P.55
Pressure switch	P.55
Pressure regulator	P.55
Solenoid valve	P.55
Band and clip	P.56
Clip	P.56
Tube	P.56
Brass accessories	P.56
Pressure gauge	P.57
Quick fitting	P.58
Traditional fitting	P.59



Faucet

CN8088 Certification Ceramic Series



01 LF-PS80



02 LF-PV83



03 LF-P905



04 LF-P888



05 LF-PV905



06 LF-11CP

Code	Description
01	LF-PS80 Ceramic Faucet
02	LF-PV83 Ceramic Faucet
03	LF-P905 Ceramic Faucet

Code	Description
04	LF-P888 Ceramic Faucet
05	LF-PV905 Ceramic Faucet
06	LF-11CP Ceramic Faucet

Other Series



01 Star-01



02 WDF-803



03 WDF-833



04 WDF-833BN



05 2105

Code	Description
01	Star-01
02	WDF-803
03	WDF-833

Code	Description
04	WDF-833BN
05	2105 Stainless Steel Faucet

Faucet Accessories

Code	Description
01	3/8" Female tube quick connection
02	3/8" Female brass tube connection

Filter housing



10" Housing

CODE	DESCRIPTION	PORT
01	FKEG-10CW-2	1/4"
02	FKEG-10WW-2	1/4"
03	EG2-10CW-2	1/4"
04	EG2-10WW-2	1/4"
05	EG-10CW-2	1/4"
06	EG-10WW-2	1/4"
07	EGS1-10CW-2	1/4"
08	EGS1-10WW-2	1/4"
09	YT-10CW-2	1/4"
10	YT-10WW-2	1/4"
11	YT-10CB-4	1/2"
12	YT-10CW-3	3/8"

10" Big Blue Housing

CODE	DESCRIPTION	PORT
13	YTB-10CB-1	1"
14	YTB-10BL-1	1"

20" Housing

CODE	DESCRIPTION	PORT
15	YT-20CW-3	3/8"
16	YT-20WW-3	3/8"
17	YT-20CB-4	1/2"
18	YT-20WW-4	1/2"

20" Big Blue Housing

CODE	DESCRIPTION	PORT
19	YTB-20CB-1	1"
20	YTB-20BL-1	1"

Housing wrench

Code	Description
01	5 in 1 multi wrench
02	27x12 Membrane housing wrench
03	30x12 Membrane housing wrench



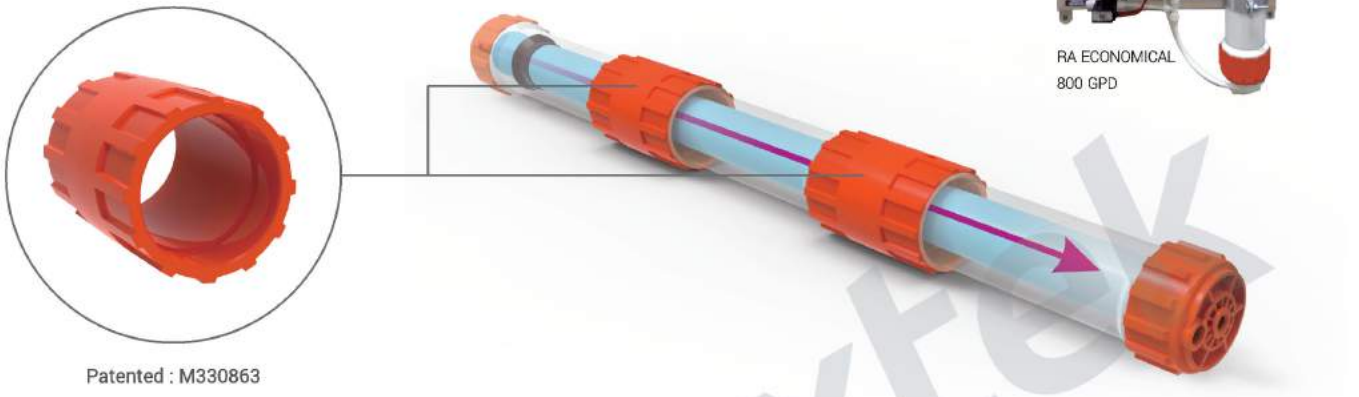
Membrane vessel

2540 Membrane Housing

- Used in restaurants, schools, water stations and etc.
- With 800G-2540 RO membrane
- More economical than stainless steel housing



RA ECONOMICAL
800 GPD



Patented : M330863

2712 Membrane Housing

Lengthening Connection

- Could accommodate 2.3" x 12" and 2.4" x 12" membrane elements
- Housing connector use to combine the housings with 2 membrane elements into one complete piece
- Cost effective solution for commercial R.O. System
- Suitable for 250GPD-1200GPD applications
- Unique design, connecting membrane housings in series with housing connector
- Easy to assemble, easily meet the requirement of larger output



Code	Description
01	27x12 Membrane housing
02	25x40 Membrane housing
03	27x12 Membrane housing connector



Other Series

Code	Description
01	18X12 Membrane housing
02	30x12 Membrane housing



Storage tank

CERTIFICATION : NSF , CE



02 W-3.2G



03 TP-19P



05 W-11G



06 W-20G

Code	Model	Total Gal.	Volume Liters	Connector Npt	Dimension Diameter MM	Weight Kg
01	TP-14P	2.2	8	1/4"	201	2.6
02	W-3.2G	3.2	12	1/4"	230	3.1
03	TP-19P	3.2	12	1/4"	240	4
04	W-5.5G	5.5	21	1/4"	290	4.9
05	W-11G	10.3	40	1/4" 3/4"	390	9
06	W-20G	20	80	1"	390	16.7

Ball valve

Code	Description	Tube
01	Ball Valve	1/4"
02	Ball Valve	3/8"



Flow restrictor

Code	Description	Code	Description
01	300 cc 1/4" Flow restrictor	05	1000 cc 1/4" Flow restrictor
02	400 cc 1/4" Flow restrictor	06	2000 cc 1/4" Flow restrictor
03	500 cc 1/4" Flow restrictor	07	3000 cc 1/4" Flow restrictor
04	800 cc 1/4" Flow restrictor		



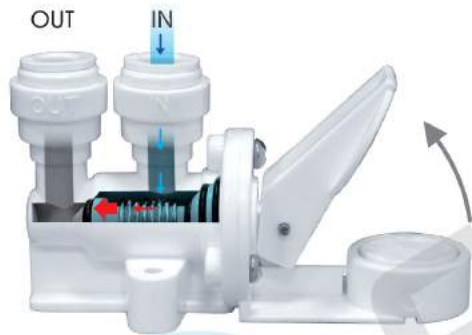
Leak detector & Leak detector plus

Leak detector easy to install and requires no electrical connection for operation.

Leak detector can be used for any osmosis equipment 5 or 6 stages and compact systems.

Leak detector Plus is placed in an appropriate tray to cover a large area of detection when used in osmosis systems 5 and 6 stages.

- Easy to use
- Convenient to pinpoint any leak on system
- Provide an accurate leak detection
- Speedy cotton change
- Cover large detection surface area with tray design
- Hassle free design, inlet water remains opened during cotton change



Leak Detector



Leak Detector Plus

1

When a leak occurs, the cotton upon contact with water rapidly-in creases its size arriving to Leak Detector arm and shut off the water inlet.

2

Remove and discard the used cotton.

3

Place a new absorbent cotton.

4

Lower the Leak Detector arm to restore the water supply to the system.

Code	Model
01	Leak detector - QC 1/4"
02	Leak detector - QC 3/8"

Code	Model
03	Leak detector plus - QC 1/4"
04	Absorbent sponge

Shut-off & Check valve

Code	Description
01	1/4" Shut Off Valve
02	1/4" Quick Connection Shut Off Valve
03	3/8" Shut Off Valve
04	Check Valve 1/8" x 1/4"



Pressure switch

Code	Description
01	1/4" F 5A Minimum pressure switch
02	1/4" T 5A Maximum pressure switch
03	1/4" F 15A Minimum pressure switch
04	1/4" T 15A Maximum pressure switch



Pressure regulator

Pressure regulator valve designed to protect the filtration system through pressure limitation and reduction of water hammer.

- No need for external drives; fluid drives the action of the valve
- Flow rate: 7.5LPM at 100PSI
- 40 PSI Series: For use in reverse osmosis with pump where required inlet pressure is lower at 3 bar
- 70 PSI Series: For use in reverse osmosis without pump where inlet pressure required is lower at 4.2 bar
- Maximum Pressure: 230 PSI
- Maximum Temperature: 40°C

Code	Model
01	40 PSI Pressure regulator Quick connection 1/4"
02	70 PSI Pressure regulator Quick connection 1/4"



Solenoid valve

Code	Description
01	1/4" F x 1/4" F 24V DC Solenoid valve
02	3/8" F 5mm DC Solenoid valve



Band and clip

- Easy to use by press in divide and click on to band the filters and membrane housing
- Optional without the band
- Innovative design in banding the filters and membrane housing tight
- Diameter range 60-64mm, applicable for K33 filters and membrane housing

Code	Description
01	Band and clip for 2 1/2"
02	Band and clip for 2"
03	Double Band and clip for 2"x 2 1/2"
04	Double Band and clip for 2 1/2" x 2 1/2"



Clip

Code	Description
01	Clip for 2 1/2"
02	Clip for 2"
03	Double clip for 2" x 2 1/2"
04	Double clip for 2 1/2" x 2 1/2"
05	Drain clamp



Tube

Code	Description
01	1/4" tube (White/Blue/Red/Black/Yellow/Orange)
02	3/8" tube (White/Blue/Black)
03	1/2" tube (White/Blue)



Brass accessories

Code	Description
01	Manual flushing valve 1/4" F x 1/4" F
02	Brass ball valve 1/4" M x 1/4" T
03	Brass ball valve 1/4" M x 3/8" T
04	Feed adapter for faucet 3/8" x 1/4" x 3/8"
05	Feed adapter for faucet 1/2" x 1/4" x 1/2"



Pressure gauge

Build in, Glycerine

Code	
01	2.5" 7kg:1/4" PT
02	2.5" 10kg:1/4" PT
03	2.5" 20kg:1/4" PT
04	2.5" 25kg:1/4" PT



Build in, Glycerine

Code	
01	2.5" 7kg:1/4" or 1/8"PT
02	2.5" 10kg:1/4" or 1/8"PT
03	2.5" 20kg:1/4" or 1/8"PT
04	2.5" 25kg:1/4" or 1/8"PT



Bottom Connection, Glycerine

Code	
01	2.5" 7kg:1/4" or 1/8"PT
02	2.5" 10kg:1/4" or 1/8"PT
03	2.5" 20kg:1/4" or 1/8"PT
04	2.5" 25kg:1/4" or 1/8"PT



Panel mount clamp, Glycerine

Code	
01	1.5" 10kg:1/8"PT
02	1.5" 20kg:1/8"PT



Gauge connector for pressure gauge



Code	Tube	Pipe
01	1/4"	3/8"
02	1/4"	3/8"
03	1/4"	1/8"
04	1/4"	1/8"

Code	Tube	Pipe
05	1/4"	1/4"
06	1/4"	1/4"
07	3/8"	1/8"
08	3/8"	1/8"

Code	Tube	Pipe
09	3/8"	1/4"
10	3/8"	1/4"
11	3/8"	3/8"
12	3/8"	3/8"

Quick fitting

Code	Description	Tube	Tube	-
01	Bulkhead	1/4"	1/4"	-
02	Bulkhead	3/8"	3/8"	-



Code	Description	Tube	Pipe	-
03	1042 Male Connector	1/4"	1/8"	-
04	1044 Male Connector	1/4"	1/4"	-
05	1064 Male Connector	3/8"	1/4"	-
06	1066 Male Connector	3/8"	3/8"	-
07	1068 Male Connector	3/8"	1/2"	-
08	1086 Male Connector	1/2"	3/8"	-
09	1088 Male Connector	1/2"	1/2"	-



Code	Description	Tube	Tube	-
10	1544 Union Connector	1/4"	1/4"	-
11	1564 Union Connector	3/8"	1/4"	-
12	1566 Union Connector	3/8"	3/8"	-



Code	Description	Tube	Pipe	-
13	4042 Elbow Adaptor	1/4"	1/8"	-
14	4044 Elbow Adaptor	1/4"	1/4"	-
15	4046 Elbow Adaptor	1/4"	3/8"	-
16	4064 Elbow Adaptor	3/8"	1/4"	-
17	4066 Elbow Adaptor	3/8"	3/8"	-
18	4068 Elbow Adaptor	3/8"	1/2"	-
19	4086 Elbow Adaptor	1/2"	3/8"	-
20	4088 Elbow Adaptor	1/2"	1/2"	-



Code	Description	Tube	Stem	-
21	4944 Stem Elbow	1/4"	1/4"	-
22	4964 Stem Elbow	3/8"	1/4"	-
23	4966 Stem Elbow	3/8"	3/8"	-



Code	Description
34	1/4" Locking clip
35	3/8" Locking clip



Code	Description	Tube	Tube	Pipe
24	7544 Male Run Tee	1/4"	1/4"	1/4"
25	7564 Male Run Tee	3/8"	3/8"	1/4"
26	7644 Male Run Tee	3/8"	1/4"	1/4"



Code	Description	Tube	Tube	Tube
27	7044 Union Tee	1/4"	1/4"	1/4"
28	7046 Union Tee	1/4"	3/8"	1/4"
29	7064 Union Tee	3/8"	1/4"	3/8"
30	7066 Union Tee	3/8"	3/8"	3/8"



Code	Description	Tube	Tube	-
31	5044 Union Elbow	1/4"	1/4"	-
32	5064 Union Elbow	3/8"	1/4"	-
33	5066 Union Elbow	3/8"	3/8"	-



Code	Description	Tube	Pipe	-
36	6044 Male Branch Tee	1/4"	1/4"	-
37	6066 Male Branch Tee	3/8"	3/8"	-



Code	Description	Tube	Pipe	-
38	Y744 Two Way Divider	1/4"	-	-



Code	Description	Tube	Pipe	-
39	2544 Faucet Connector	1/4"	-	-
40	2564 Faucet Connector	3/8"	-	-



Traditional fitting

Code	Description	Tube	Pipe	-	
01	1042	Male Connector	1/4"	1/8"	-
02	1044	Male Connector	1/4"	1/4"	-
03	1046	Male Connector	1/4"	3/8"	-
04	1048	Male Connector	1/4"	1/2"	-
05	1064	Male Connector	3/8"	1/4"	-
06	1066	Male Connector	3/8"	3/8"	-
07	1068	Male Connector	3/8"	1/2"	-



Code	Description	Tube	Tube	-	
24	1544	Union connector	1/4"	1/4"	-
25	1564	Union connector	3/8"	1/4"	-



Code	Description	Tube	Pipe	-	
08	4042	Male Elbow	1/4"	1/8"	-
09	4044	Male Elbow	1/4"	1/4"	-
10	4046	Male Elbow	1/4"	3/8"	-
11	4064	Male Elbow	3/8"	1/4"	-
12	4066	Male Elbow	3/8"	3/8"	-
13	4088	Male Elbow	1/2"	1/2"	-



Code	Description	Tube	Tube	-	
26	2542	Female Connector	1/4"	1/8"	-
27	2544	Female Connector	1/4"	1/4"	-



Code	Description	Tube	Pipe	-	
28	6044	Male Branch Tee	1/4"	1/4"	-
29	6064	Male Branch Tee	3/8"	1/4"	-
30	6066	Male Branch Tee	3/8"	3/8"	-



Code	Description	Tube	Tube	Pipe	
14	7544	Male Run Tee	1/4"	1/4"	1/4"M
15	7564	Male Run Tee	3/8"	3/8"	1/4"M
16	7566	Male Run Tee	3/8"	3/8"	3/8"M
17	7568	Male Run Tee	3/8"	3/8"	1/2"M



Code	Description	Tube	Pipe	-	
31	1944	Stem Adaptor	1/4"	1/4"	-
32	1964	Stem Adaptor	3/8"	1/4"	-
33	1966	Stem Adaptor	3/8"	3/8"	-



Code	Description	Tube	Tube	Tube	
18	7044	Union Tee	1/4"	1/4"	1/4"
19	7066	Union Tee	3/8"	3/8"	3/8"



Code	Description
34	Insert for 1/4" tube
35	Insert for 3/8" tube



Code	Description	Pipe	Pipe
20	Double Male Connector	1/4"	1/4"
21	Double Male Connector	3/8"	3/8"
22	Double Male Connector	1/2"	1/2"
23	Double Male Connector	3/4"	3/4"



Code	Description
36	Celcon sleeve 1/4"
37	Celcon sleeve 3/8"



Media

FLU

Coconut Shell Carbon

P.61

Filtering Media

P.61



Coconut shell carbon

Many grades are available which can be used in various applications. Follow procedures of ASTM.



Coconut shell carbon

Coconut Shell Based Activated Carbon : Our Coconut Shell based activated carbon has a predominance of micropores measuring under 1 nanometer in diameter and is highly efficient in absorbing small gaseous molecules in applications where the contaminant concentration is low.

Carbon material test report

TEST ITEM	UNIT	RESULT	METHOD
Apparent density	g/ml	0.49	ASTM D2854
Particles size distribution	%	95.70	ASTM D2862
Hardness	%	98.91	ASTM D3802
Moisture	%	5.60	ASTM D2867
Total ash content	%	1.50	ASTM D2866
Iodine number	mg/g	1050	ASTM D4067
pH	-	9.70	ASTM D3838

Filtering media



Ion Exchange Resin

Softens water by exchanging the calcium and magnesium ions in water



KDF

Effectively removes chlorine and heavy metals and also prohibits the growth and reproduction of microorganisms in water.



Maifanite

Maifanite contains trace elements needed by the human body



Calcium Carbonate

Supplement of calcium required by the human body



Far Infrared Ceramic Balls

Far infrared rays can make water molecules smaller, highly increase the amount of dissolved oxygen in water, and easier to penetrate into the human cells.



Calcite

Remove odor from water, supplement of calcium required by human body



Far Infrared Beehive Net

Far infrared rays can make water molecules smaller, highly increase the amount of dissolved oxygen in water, and easier to penetrate into human cells.



Calcium Sulfite

Calcium sulfite has an extremely high ability to remove residual chlorine and an instant reaction time to reach 99% or more. The reaction time is as rapid as 0.8 seconds, which makes it an ideally high-efficiency chlorine removal product.



Fluxtek International Corporation

Tel: 886 8 7558557 | Fax: 886 8 7537100 | www.fluxtek.com